


TOYOTA
C-HR



TOYOTA

ALWAYS A
BETTER WAY



A white Toyota C-HR is shown driving on a city street. The car is in the foreground, moving towards the viewer. The background features tall, multi-story buildings with classical architectural details. A man is walking on the sidewalk to the right of the car. The scene is brightly lit, suggesting a sunny day.

Don't just take to the streets – own them. Turn corners, turn heads, turn up. Drive away from convention with the Toyota CH-R. The already iconic Toyota C-HR, with its striking looks and aerodynamic aesthetic, is now rejuvenated as your standout SUV. So step inside the lush interior, take the wheel and power towards your new adventure. With the new Toyota C-HR, you will satisfy your need to be bold and go further. Leave ordinary behind.

TOYOTA C-HR

**LEAVE
ORDINARY
BEHIND**

TIME TO WAKE UP THE CITY

In a world full of ordinary, stand out. Throw away the rule book and trust in the extraordinary. The new Toyota C-HR. A contemporary coupe with an iconic angular design and compact silhouette, the Toyota C-HR embodies urban mobility. It's coupled with a wide stance, formidable power and impeccable handling, a gift to the winding streets and ever-changing city life. So aspire to be the best, to be yourself and enjoy life's adventures.







THRILLING PERFORMANCE, INSTANT POWER

Life is a journey waiting to be driven. Engaging and dynamic, the new Toyota C-HR ensures you take on your adventure fully equipped to conquer every road. With instant acceleration exactly when you need it, and power patiently waiting to assume command, you'll take on all challenges on your terms. Exceptionally able, the new Toyota C-HR delivers a Hybrid experience that kicks against convention.



YOUR ROAD, YOUR WAY

Smooth, efficient and powerful, the new Toyota C-HR performs as never before. With instant acceleration and further capability from the recently introduced 2.0 litre Hybrid powertrain, you can thread through city streets and power along motorways, defying norms at every opportunity.

Specifications

HYBRID

1.8 PETROL HYBRID AUTO

Power **122 DIN hp**

Fuel consumption* **54.3–58.8 mpg**

CO₂ emissions* **86 g/km**

0–62 mph **11.0 seconds**

Available on **Icon, Design,**

Excel and Dynamic

HYBRID

2.0 PETROL HYBRID AUTO

Power **184 DIN hp**

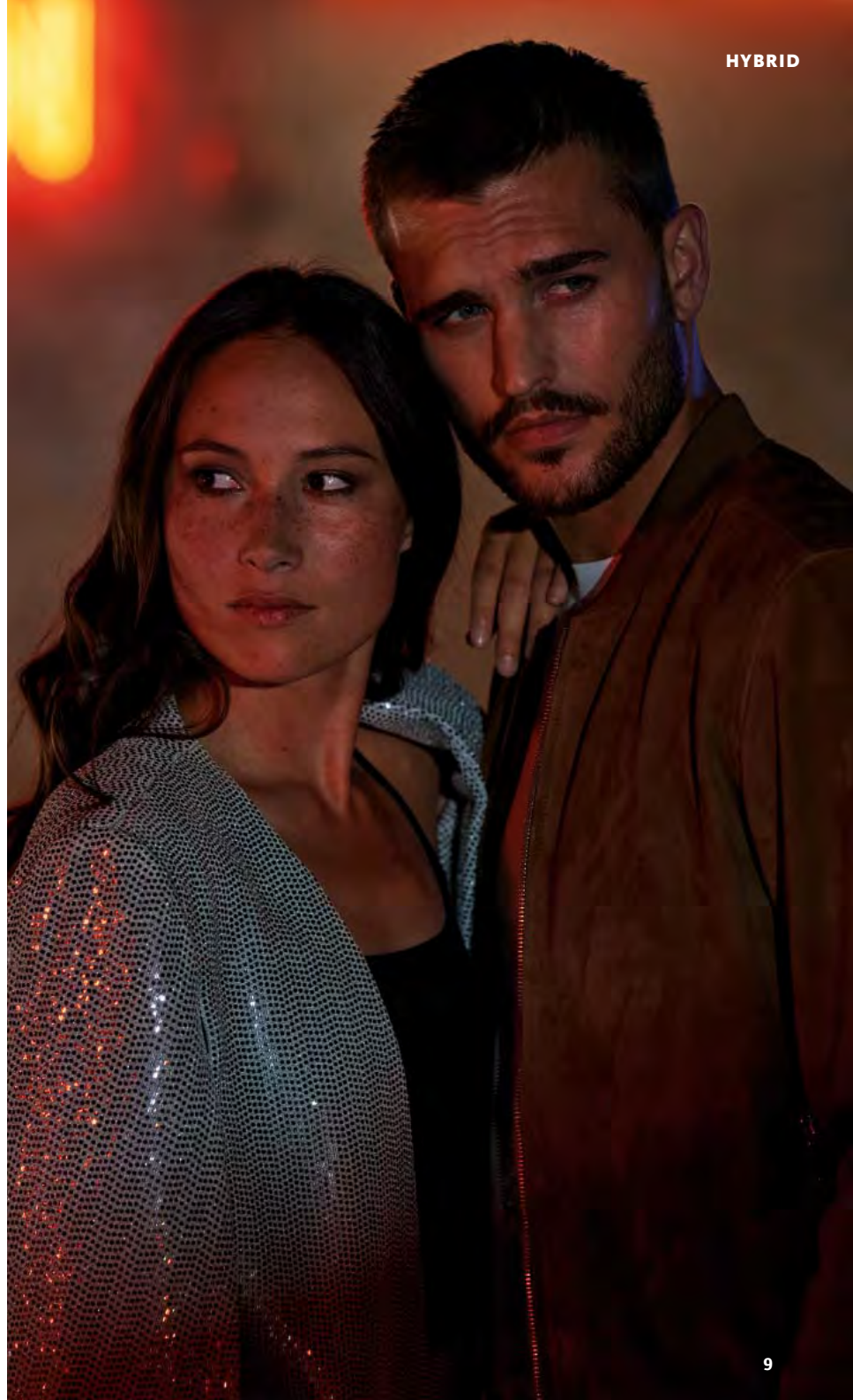
Fuel consumption* **49.5–54.3 mpg**


CO₂ emissions* **92 g/km**

0–62 mph **8.2 seconds**

Available on **Design, Excel, Dynamic
and Orange Edition**

* Combined cycle.



The image shows the interior of a car, likely a Toyota C-HR, at night. The scene is dimly lit, with a soft blue glow emanating from the ambient lighting. The driver's side door is open, and the interior of the door is visible. The steering wheel, featuring the Toyota logo, is partially visible on the right. The seats have a diamond-patterned texture. In the background, through the window, there are blurred lights, possibly from a building or streetlights, creating a bokeh effect. The overall atmosphere is modern and sophisticated.

CLEAN CUT DETAILS TAKE CENTRE STAGE

You want the most out of every moment: the way you live, the way you work and the way you play. That's why we designed the new Toyota C-HR cabin to be enjoyed. With seats that hug and strong diamond patterns that lend prestige, both comfort and style are catered for. Lining the interior, soft-touch surfaces are paired with contrasting gloss black inserts to create a contemporary feel. Then as day fades, the mood changes, and you are bathed in the soft blue glow of the ambient lighting.



576 WATTS OF PASSION IMMERSE YOURSELF IN CRISP TREBLE AND RICH BASS

You move to a different beat. We wouldn't want it any other way. That's why the bespoke JBL audio system* gives you a clarity you've only experienced live. Connect your smartphone and stream your favourite tracks for an experience that puts the artist in your car.

Life has a soundtrack, play it loud.

* Standard on Orange Edition, optional on Excel and Dynamic.



CONNECT YOUR PHONE GET MORE FROM YOUR DRIVE

MyT | Connected
Services

LIFE HAPPENS WHEN YOU CONNECT

MyT Connected Services includes MyT Multimedia and MyT App. Each suite is host to its own set of features, designed to make driving safer and more fun, whether you are inside or outside your vehicle. Through MyT Connected Services, you'll have access to Hybrid Coaching which helps you optimize your EV driving, and real-time updates such as speed camera warnings. In addition you'll have the ability to connect your phone to your car to enjoy your favourite apps directly through the infotainment screen.

Discover more at: www.toyota-europe.com/MyT





MyT | Multimedia

INTUITIVE, ADVANCED AND ENTERTAINING

With smartphone integration via Apple CarPlay™ and Android Auto™ you can also use favourite apps like Spotify, WhatsApp, Audible, Google Maps and Waze, all accessible via Siri voice assist and Ok Google.

MyT Multimedia gives you access to the information you really need, like real-time traffic alerts and speed camera warnings. You can also check Points of Interest, locate parking spaces and review destinations with Google Street View.



MyT | App

ALWAYS CONNECTED TO YOUR TOYOTA

MyT App on your smartphone lets you communicate with your car, no matter where you are. You can plan journeys from home, locate your parked car and even book your service online. The Hybrid Coaching feature provides analytics on your driving style, together with useful feedback that can help increase your EV driving ratio and improve your fuel efficiency, so you can get the most from your Hybrid.

MyT by Toyota



YOU DO LIFE, WE DO SAFETY

Take it easy. Toyota C-HR has some of the most sophisticated safety technologies in the world. Stay focused and in the moment while we take care of keeping you and your passengers safe.

Blind Spot Monitor (BSM)*

Alerts the driver to any vehicles that might be missed in the side view mirrors.

**Rear Cross Traffic Alert (RCTA-B)*
(with Automatic Braking)**

When you back out of a parking space, rear-mounted sensors identify vehicles approaching from the left or right, warning you and then applying the brakes to avoid a collision.

**Simple Intelligent Parking Assist[‡]
(with Automatic Braking)**

The system helps you to steer your Toyota smoothly into a parking space or garage. All you do is provide the necessary acceleration and braking while the car parks itself.

Intelligent Clearance Sonar (ICS)[°]

Using an array of sensors to create a 360° picture, the system detects objects around the vehicle, and provides an audible warning before applying the brakes to avoid a collision.

* Standard on Excel, Dynamic & Orange Edition – Optional as part of Tech Pack on Icon.

‡ Standard on Design, Excel, Dynamic and Orange Edition.

° Standard on Design, Excel, Dynamic and Orange Edition – Optional on Icon as part of Parking Pack.

All active safety technologies are intended to be back-up systems only and are not a substitute for safe and attentive driving. The functionality of these systems may be impacted by driving conditions. Further information is available from your local Toyota Centre.





ICON

Main features

- 17" Silver Alloy wheels
- Toyota Safety Sense
- 8" touchscreen with Toyota Touch® 2 media system with Smartphone integration, including Apple CarPlay™ and Android Auto™, 6 speakers, DAB & Bluetooth® connectivity
- Reversing camera
- Adaptive Cruise Control (ACC)
- Dual-zone automatic air conditioning
- Push-button start
- 4.2" coloured TFT multi-information display
- 3-spoke leather steering wheel
- Electronic parking brake
- LED Daytime running lights
- LED Auto Headlights
- Front fog lights
- Grey Deco line

Optional features

- 17" Matt black machined-face alloy wheels
- Essential Protection Pack (boot liner & black/chrome bumper protection plate)
- Protection + Pack (boot liner, black/chrome bumper protection plate, rubber mats & scuff plates)
- Sport + Pack (front guard, rear underguard & side skirts)
- Tech Pack (Smart entry, Blind Spot Monitor (BSM), Rear Cross Traffic Alert (RCTA), auto-retractable door mirrors with puddle lights and auto wipers)
- Parking Pack (Front & Rear Parking Sensors with intelligent clearance sonar and automatic braking)

**THE
COLLECTION
FIND THE
MATCH THAT
FITS YOUR LIFE**





START A REVOLUTION
AN UNAPOLOGETIC INTRODUCTION
TO THE TOYOTA C-HR



Dark grey textured fabric
with light grey stitching



17" silver alloy wheels
(5-double-spoke)





MAKE A STATEMENT
SET THE STANDARD WITH PLENTY
OF EXTRA FEATURES



Dark grey textured fabric
with silver stitching



18" black machined-face alloy
wheels (5-double-spoke)

DESIGN

Main features (additional to Icon grade)

- 18" Black machined-face alloy wheels (5-double-spoke)
- Simple Intelligent Parking Assist (S-IPA)
- Front and rear parking sensors with Intelligent Clearance Sonar (ICS) and automatic braking
- Toyota Touch® 2 with Go Navigation with enhanced features
- Heated front seats with manual height adjustment & power-adjustable lumbar support
- Smart Entry
- Auto Wipers
- Auto-retractable, heated door mirrors with integrated indicator
- Privacy Glass
- Illuminated entry with blue ambient lighting in front doors & cupholders
- Electro chromatic rear-view mirror
- Satin Grey Deco line

Optional features

- 18" Matt black alloy wheels with matt black centre cap
- Leather Pack (full black electric leather seats)
- Essential Protection pack (boot liner & black/chrome bumper protection plate)
- Protection + Pack (boot liner, black/chrome bumper protection plate, rubber mats & scuff plates)
- Sport + Pack (front guard, rear underguard & side skirts)



Main features (additional to Design grade)

- 18" Black machined-face alloy wheels (10-double-spoke)
- Rear Cross Traffic Alert with Automatic Braking (RCTA-B) & Blind Spot Monitor (BSM)
- Full black leather electrically heated front seats
- Heated steering wheel
- LED adaptive headlights with sequential indicators
- LED Rear lights
- LED fog lights
- Humidifying Nanoe™ air filter
- Silver Deco line
- Puddle lights

Optional features

- 18" Matt black alloy wheels with matt black centre cap
- JBL Pack (JBL premium sound system & 9 speakers)
- Essential Protection pack (boot liner & black/chrome bumper plate)
- Protection + Pack (boot liner, black/chrome bumper plate, rubber mats & scuff plates)
- Sport + Pack (front guard, rear underguard & side skirts)





COMPROMISE IS NOT YOUR STYLE
NEXT LEVEL LUXURY THAT
COMES AS STANDARD



Black perforated leather
with diamond pattern



18" black machined-face alloy
wheels (10-double-spoke)





DYNAMIC

Main features (additional to Design grade)

- 18" Dark grey machined-face alloy wheels (10-double-spoke)
- Rear Cross Traffic Alert with Automatic Braking (RCTA-B) & Blind Spot Monitor (BSM)
- LED Adaptive headlights with sequential indicators
- LED Adaptive rear lights
- LED fog lights
- Standard Metallic Paint
- Black Bi-tone roof
- Dynamic fabric seats
- Blue Deco line
- Puddle lights

Optional features

- 18" Matt black alloy wheels with matt black centre cap
- Leather Pack (full black electric leather seats)
- Leather and JBL Pack (full black electric leather seats & JBL premium sound system & 9 speakers)
- Essential Protection pack (boot liner & black/chrome bumper plate)
- Protection + Pack (boot liner, black/chrome bumper plate, rubber mats & scuff plates)
- Sport + Pack (front guard, rear underguard & side skirts)



NEVER ORDINARY
STAND-OUT LOOKS WITH CUTTING
EDGE TECHNOLOGY



Black quilted fabric with blue stitching and blue bolsters



18" dark grey machined-face alloy wheels (10-spoke)





ORANGE EDITION

Main features (additional to Excel grade)

- 18" Matt black alloys (5-double-spoke) with matt black wheel caps
- Black Bi-tone roof with unique Scorched Orange paint
- JBL Premium audio system & 9 speakers

Optional features

- Essential Protection pack (boot liner & black/chrome bumper plate)
- Protection + Pack (boot liner, black/chrome bumper plate, rubber mats & scuff plates)
- Sport + Pack (front guard, rear underguard & side skirts)

BE THE DIFFERENCE
SAY NO TO CONVENTION AND GIVE
YOURSELF THAT URBAN EDGE



Black perforated leather
with diamond pattern



18" matt black alloy wheels
(5-double-spoke)

**STYLE WITHOUT
COMPROMISE
SPORT + PACK**



Side skirts



Front underguard



Rear underguard

Vehicle shown is for illustrative purposes only.

DISCOVER YOUR C-HR



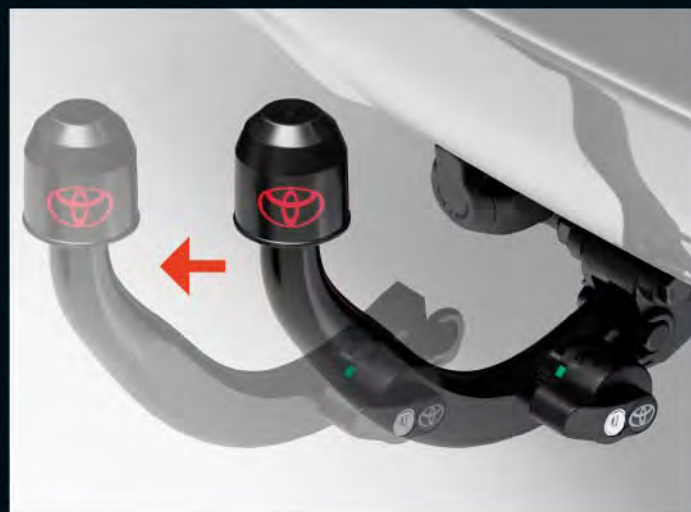
Luggage box



Ski holder



Cross bars



Toyota C-HR towing options consist of a detachable tow bar with a choice of either a 7- or 13-pin dedicated Toyota genuine wiring kit.

Supplied with a smart protective tow-ball cap which can be neatly placed over tow-ball when not towing. The hook is easily removed from the mount by means of release knob which incorporates a dedicated security lock.

The detachable tow bar is designed for your car's maximum towing capacity, which varies depending on engine type.

ESSENTIAL PROTECTION PACK

COMPLETE PROTECTION



Boot liner

Tailored to fit the boot of your vehicle the boot liner offers a durable protective tray which is removable and easy to clean. Perfect for travelling pets.



Rear bumper protection plate (chrome or black)

A polished chrome rear bumper protection providing tough paintwork protection when loading or unloading the boot.

Vehicle shown is for illustrative purposes only.

PROTECTION +



Rear bumper protection plate (chrome or black)



Boot liner



Rubber floor mats

Designed to protect your cars interior, rubber floor mats are lightweight, waterproof and incredibly hard-wearing.



Scuff plates

The polished Toyota C-HR scuff plate introduces a compelling detail to your cars interior.

**MIX IT UP,
BE BOLD**



1K3 Satin Grey⁵

8X2 Nebula Blue⁵

040 Pure White

070 Pearl White⁶

305 Scarlet Flare⁸

209 Eclipse Black*

1G3 Decuma Grey*

1K0 Metal Stream*

**CHANGE
PERSPECTIVE,
BE DISTINCT**



- 1. 2NK Metal Stream* with black roof
- 2. 2NH Nebula Blue* with black roof
- 3. 2NB Decuma Grey* with black roof
- 4. 2TH Satin Grey* with black roof
- 5. 2TC Scorched Orange*** with black roof
- 6. 2NA White Pearl° with black roof

* Metallic paint.

° Not available on Excel.

° Pearlescent paint.

** Only available on Orange Edition.

IT'S THE DETAILS THAT COUNT



1. 17" silver alloy wheels (5-double-spoke) Standard on Icon

2. 17" 5-spoke matt black alloys Optional on Icon

3. 18" black machined-face alloy wheels (5-double-spoke) Standard on Design

4. 17" 5-spoke machined black alloys Optional on Icon

5. 18" black machined-face alloy wheels (10-double-spoke) Standard on Excel

6. 18" dark grey machined-face alloy wheels (10-spoke) Standard on Dynamic

7. 18" matt black alloy wheels (5-double-spoke) with matt black wheel caps Standard on Orange Edition, optional on Design, Excel and Dynamic



1. **Black fabric with light grey stitching** Standard on Icon
2. **Black fabric with light blue stitching and bolsters** Standard on Design
3. **Black quilted fabric with blue stitching** Standard on Dynamic
4. **Black perforated leather with diamond pattern** Standard on Excel and Orange Edition, optional on Design and Dynamic

OWNING YOUR TOYOTA C-HR

Servicing your Toyota

Toyota Fixed Price Servicing means you will be sure to know the cost of your service up front. Expertly trained technicians using only genuine Toyota parts will carry out your service at one of over 200 Authorised Toyota Service Centres. The technicians will advise you on the correct service for your car based on the car's age, mileage and service history.

For more information visit toyota.co.uk/owners/service-mot-maintenance

Service Plans

Inflation-proof pricing with a monthly or one-off payment plan means one less thing to worry about. With Toyota Service Plans the price you're quoted is guaranteed for the duration of your plan. The service, parts and labour are all paid for either in monthly instalments or as a one-off payment at the beginning of your plan.

For more information visit toyota.co.uk/owners/service-mot-maintenance

Toyota Fixed Price Repairs using Genuine Parts

We offer fixed prices on a number of repair items for your Toyota giving you peace of mind when it comes to managing costs. Also don't forget we only use genuine Toyota parts, all of which come with at least 12 months' warranty (some even offer unlimited mileage warranties); and your car will always be dealt with by a trained Toyota technician.

For more information visit toyota.co.uk/owners/service-mot-maintenance

MyT

Whether you're a long-term owner or have recently taken delivery of a new Toyota, there are lots of reasons to join **MyT**. Packed with time-saving and convenient features, **MyT** ensures everything you need to manage your vehicle ownership is in one place. You'll also gain access to **My Rewards** where you can enjoy great offers and discounts from big brands on everything from family days out to pampering as well as everyday deals.

For more information visit toyota.co.uk/mytoyota or download the **MyT** app now available on iTunes® and Android.



Toyota Accessories

Toyota accessories are designed and manufactured with the same care, quality and attention to detail as Toyota vehicles. Tailor-made for your Toyota, they fit perfectly and add a personal touch of style, comfort and practicality. Also, because they've been tested under the most severe conditions, you can have complete confidence in their reliability and durability. To add to the reassurance, every genuine Toyota accessory has a 5-year warranty when purchased together with the vehicle.

For more information visit toyota.co.uk/owners/parts-accessories

Toyota Roadside Assistance

When you buy a Toyota you will automatically receive 12 months' AA Roadside Assistance in the UK and Europe, free of charge. After the first year the cost of Toyota Roadside Assistance is £7 per month if paid by monthly Direct Debit, £72 per annum if paid by annual Direct Debit, and £76 per annum when paid by all other payment methods.*

For full terms and conditions please visit toyota.co.uk/owners/roadside-assistance

5-Year Toyota Warranty

Every new Toyota comes with a 5-year/100,000-mile (whichever comes first) manufacturer's warranty, covering you against the unlikely event of a manufacturing defect causing a mechanical fault.

For full details, please ask your official Toyota Centre or visit toyota.co.uk/owners/warranty/toyota-warranty

Corrosion Cover

The 12-year unlimited mileage cover protects against rust perforation affecting sheet metal body panels as a result of a manufacturing fault. This warranty can also be transferred to any future owner throughout the 12-year period.

Rust and Paint Cover

The 3-year unlimited mileage cover protects against defects and surface rust as a result of a manufacturing fault.

* Prices correct at time of going to print.

Toyota Business Plus

Designed to support business operators and company vehicle drivers, Toyota Business Plus is our promise to help you procure, manage and upgrade your fleet quickly, efficiently and cost-effectively. Business Plus unites our passenger car and commercial vehicle ranges, with tailored services, ensuring fleet managers can keep their company car drivers happy and business costs down.

Our specialist Business Centres promise you same-day access to a business manager or dedicated sales executive. With business offers and interactive wholelife cost modelling tools which consider emissions, fuel economy, servicing, insurance and residual value data, our advisers can accurately compare tax costs against any competitor. Whenever servicing is due, we offer fixed-price servicing, free local vehicle collection and delivery (with wash and vac), plus a guaranteed booking within 3 days.

Special offers, fixed-price fleet servicing, specialist fleet insurance, business daily hire, Toyota Fleet Financial Services, extended test drives and a dedicated Business Centre Network are just some of the services business customers can expect from Toyota Business Plus.

Toyota Business + Plus

Toyota Extended Warranty

You have the choice of either the low-user option that restricts you to 15,000 miles per year or 12 months whichever comes first or the 12-month unlimited mileage cover. You also have a choice between 12 and 24 months' cover (subject to vehicle eligibility). The 24-month option will show a saving over two 12-month Toyota Extended Warranty policies and is available with the low-user option at 30,000 miles or 24 months whichever comes first.

The Toyota Extended Warranty can be renewed until the vehicle is 12 years old with less than 100,000 miles at point of sale, and if a part covered by the Toyota Extended Warranty suffers electrical or mechanical failure at any time during the term, Toyota is committed to fixing it. You don't pay for replacement parts or labour.

For more information visit toyota.co.uk/owners/warranty/extended-warranty

Toyota Motor Insurance

Toyota Motor Insurance is available for Toyota owners at competitive premiums. To obtain details of the benefits included and to arrange a quotation, please contact your local Toyota Centre or call 0800 350 500.

Flexible Finance from Toyota Financial Services

All our plans offer easy budgeting and peace of mind, and **AccessToyota** brings these benefits together in one flexible package.

Toyota Financial Services, Great Burgh, Burgh Heath, Epsom, Surrey, KT18 5UZ.

Finance subject to status to over 18s only. Indemnities may be required. Terms and conditions apply.

TFS is authorised and regulated by the Financial Conduct Authority.



TOYOTA
FINANCIAL
SERVICES



TOYOTA

ALWAYS A
BETTER WAY

THE NEW TOYOTA C-HR HYBRID LEAVE ORDINARY BEHIND

WWW.TOYOTA.CO.UK/C-HR

While every effort is made to reproduce accurate information, we reserve the right to change specifications, equipment and availability without prior notice. This brochure cannot be regarded as infallible (some of the vehicles shown may not be to exact UK specification), and as such does not constitute an offer for sale of any particular vehicle or specification. For the latest specification and availability, we ask that you contact your local Toyota Centre. Vehicle body colours may differ slightly from the printed images in this brochure.

Quoted mpg & CO₂: Figures are provided for comparability purposes; only compare fuel consumption and CO₂ figures with other cars tested to the same technical procedures. These figures may not reflect real-life driving results. Fuel consumption and CO₂ produced varies significantly depending on a number of factors, including the accessories fitted (post-registration), driving style, conditions, speed and vehicle load.

All models and grades are certified according to the World Harmonised Light Vehicle Test Procedure (WLTP), which replaces the New European Driving Cycle test procedure (NEDC).

All CO₂ figures quoted are NEDC equivalent. This means the CO₂ figures are based on the new WLTP test procedure but calculated (using a standard European calculation method) to allow comparison with the NEDC test procedure and will be used to calculate vehicle tax on first registration. All mpg figures quoted are full WLTP figures.

More information can be found by visiting: www.vehicle-certification-agency.gov.uk/fcb/wltp.asp.

© 2019 by Toyota Motor Europe NV/SA ('TME'). No part of this publication may in any way be reproduced without the prior written approval of Toyota (GB) PLC.



ToyotaUK



@ToyotaGB

GBNGV-1119B-CH October 2019